

Artecy

CROSS STITCH

Mini Colourful Tree



* Original image© T Clarke using Midjourney AI
Cross Stitch Design by Tereena Clarke.

Completed Size = 200w x 200h Stitches

14 Count, 14.5w x 14.5h inches (37cm x 37cm)

16 Count, 12.5w x 12.5h inches (32cm x 32cm)

18 Count, 11.5w x 11.5h inches (29cm x 29cm)

Uses 90 DMC cotton colours. Only full cross stitches are used in this pattern.

Copyright of Artecy Cross Stitch

www.artecy.com

www.artecyshop.com

www.facebook.com/groups/artecy

Pattern Instructions

* This pattern can be worked on any fabric type, colour or count you prefer. To work out the size of the finished article, take the number of stitches wide and high and divide it by the count of your fabric (e.g. 14,16,18 count aida etc) to get the size in inches. Times it by 2.54 to get centimetres. We have the sizes in inches shown on the previous page. Also leave at least a few inches of fabric around each side of the design to assist in framing. The higher the fabric count the smaller the completed project will be.

* To put the pattern together look in the top and bottom corners. The page numbers in brackets show which page number it joins up to. Page 1 always starts at the top left hand side of the pattern. Our pages also have a shaded grey section. This indicates a 3 row overlap from adjoining pages to assist with reading the pattern. PLEASE DO NOT RESTITCH THIS AREA.

* You should begin at the centre of the pattern. To find the centre of the pattern it is just a matter of laying the pattern out and locating the arrows at the top and left hand side of the patterns, they are determined by dividing the stitch numbers wide and high in half. Where the two points meet in the middle, that is the centre.

* If you need more assistance to find the middle of your pattern or the page layout, please see the notes section on the colour symbol chart. The easiest way to stitch this pattern, as it has multiple pages, is to stitch one page at a time.

* We suggest using two strands of floss for each stitch and one strand for backstitching if the pattern calls for it.

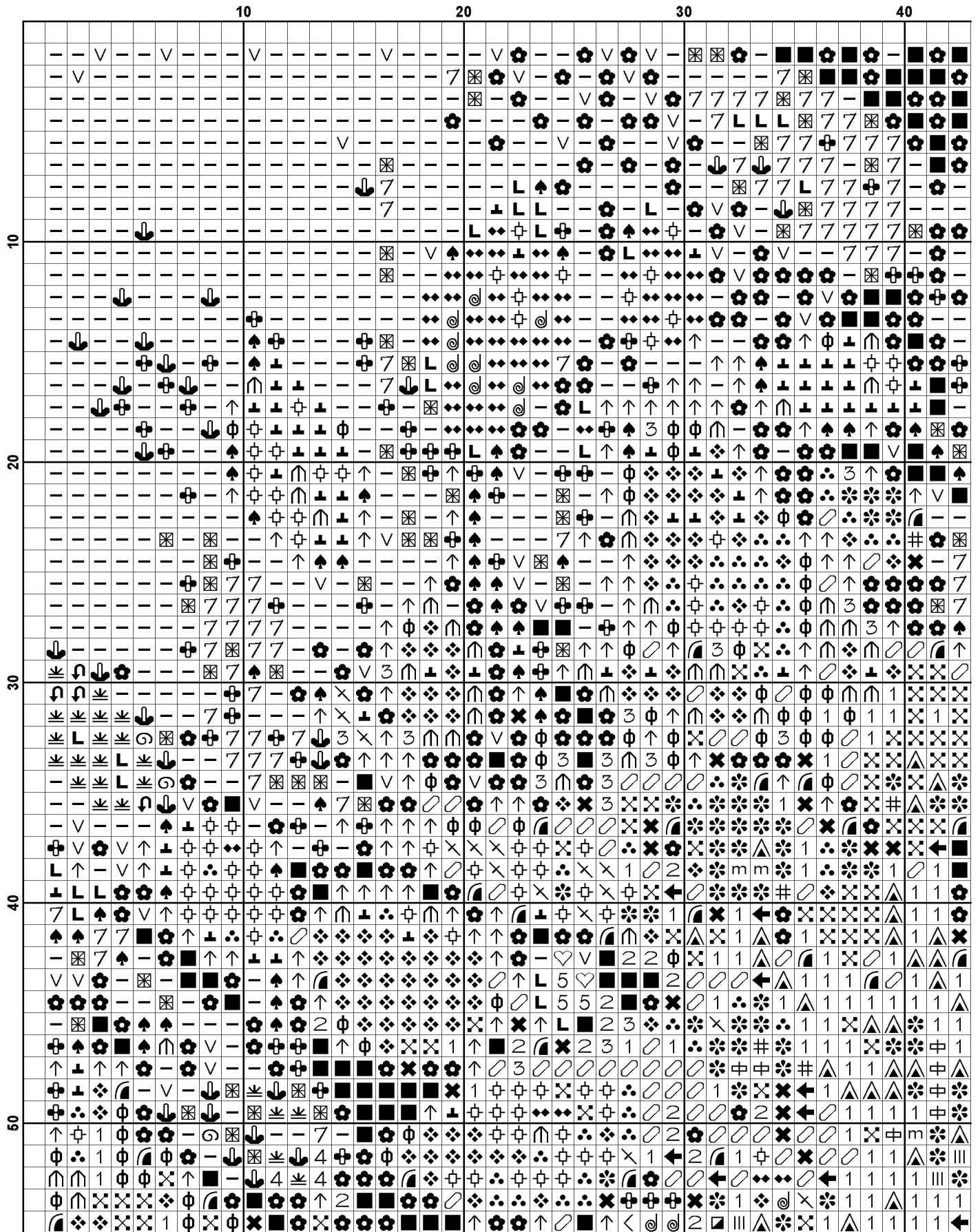
We hope you enjoy stitching our pattern.

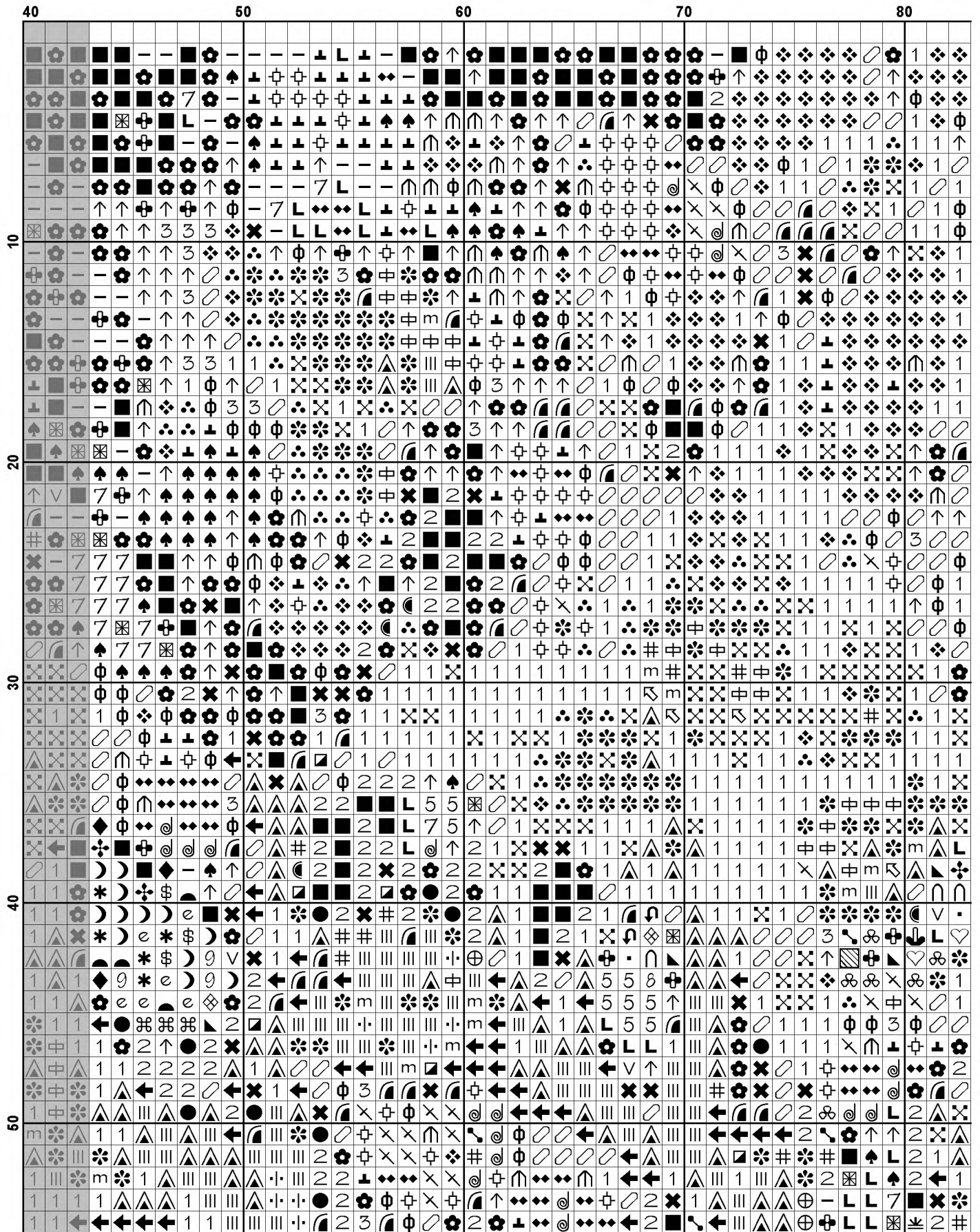
Thanks and Best Wishes
Tereena Clarke

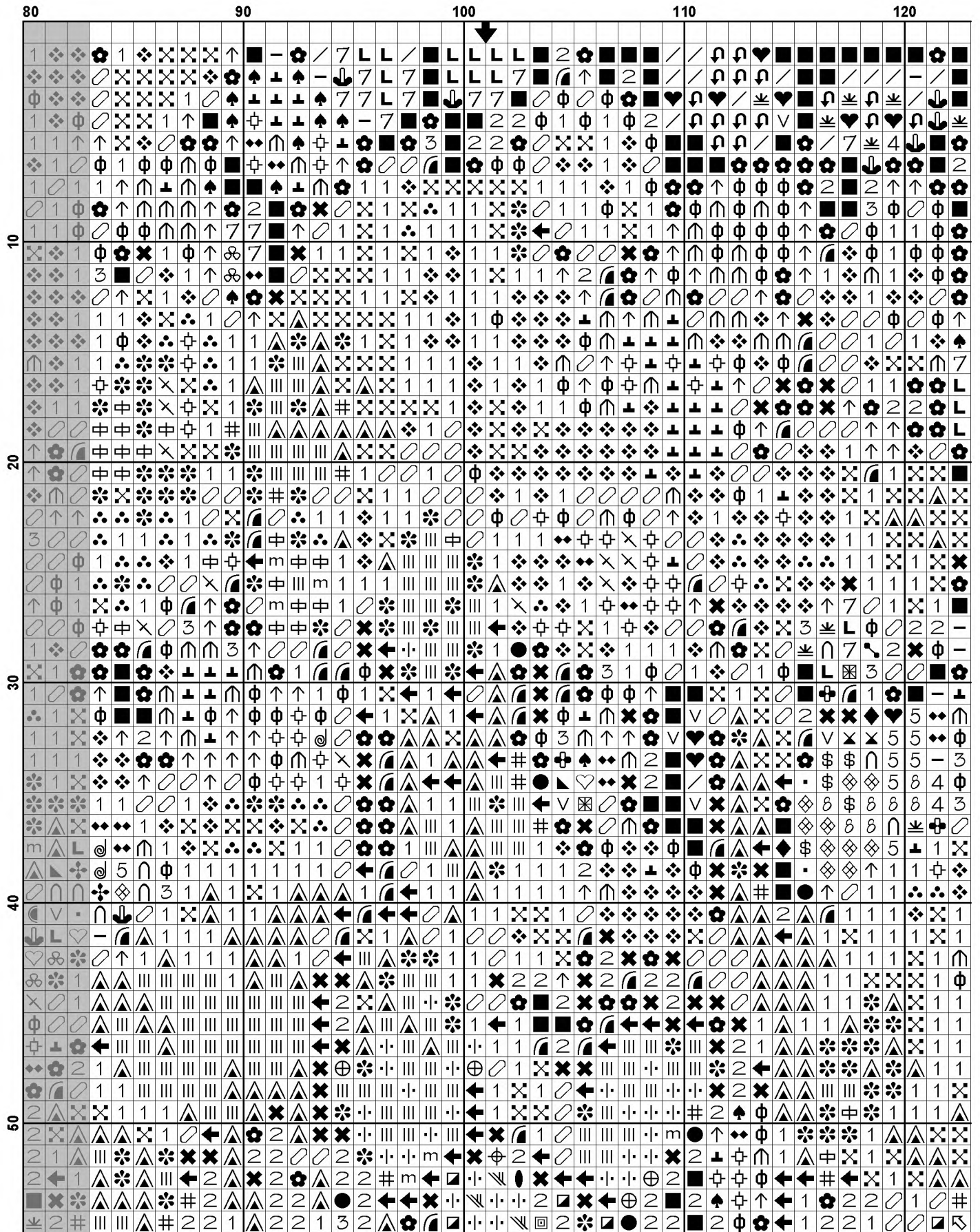
Artecy Cross Stitch
Po Box 3474
Tuggerah, NSW 2259
Australia

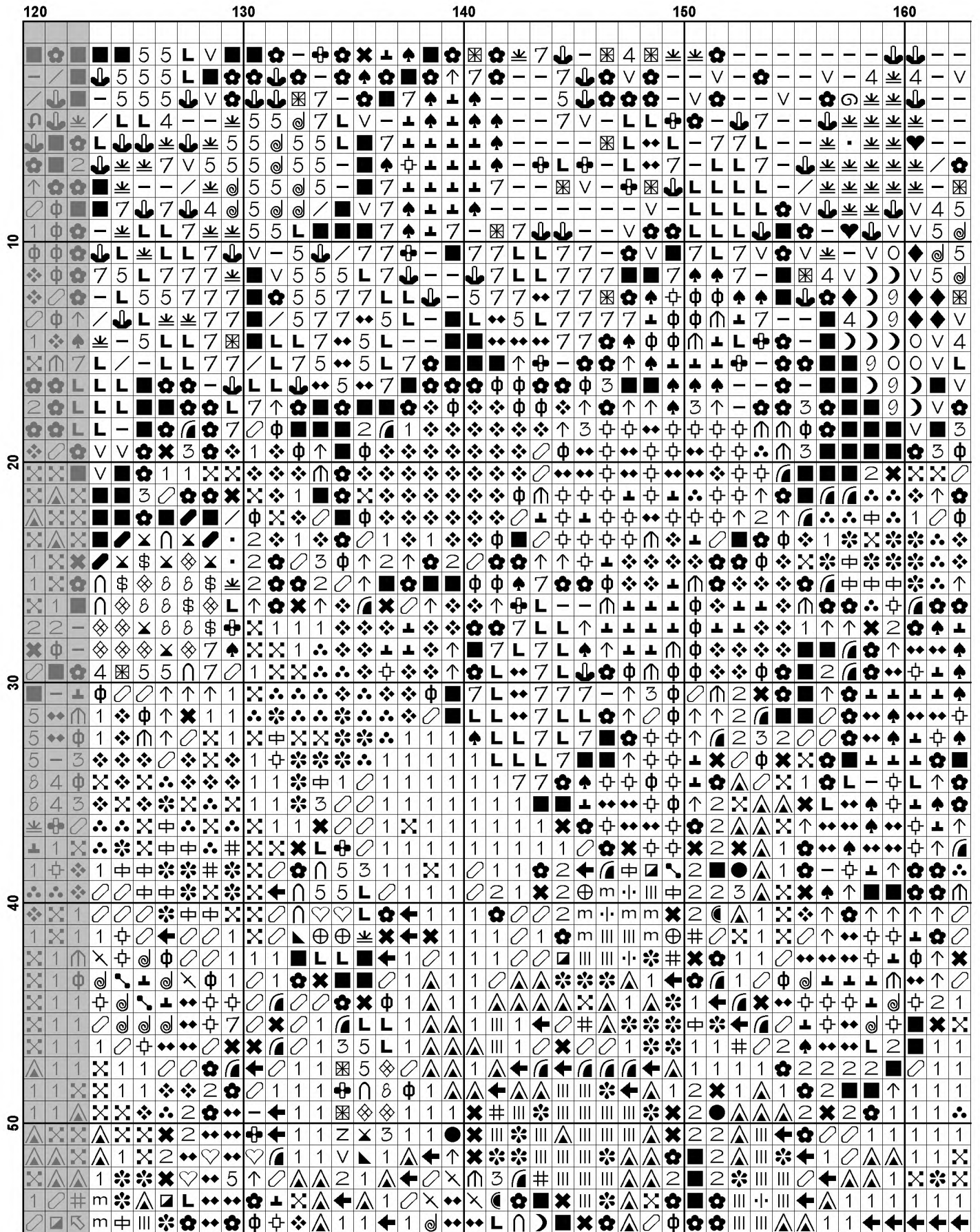
Websites: www.artecy.com and www.artecyshop.com
Email: artecy@artecy.com or stitch@artecyshop.com

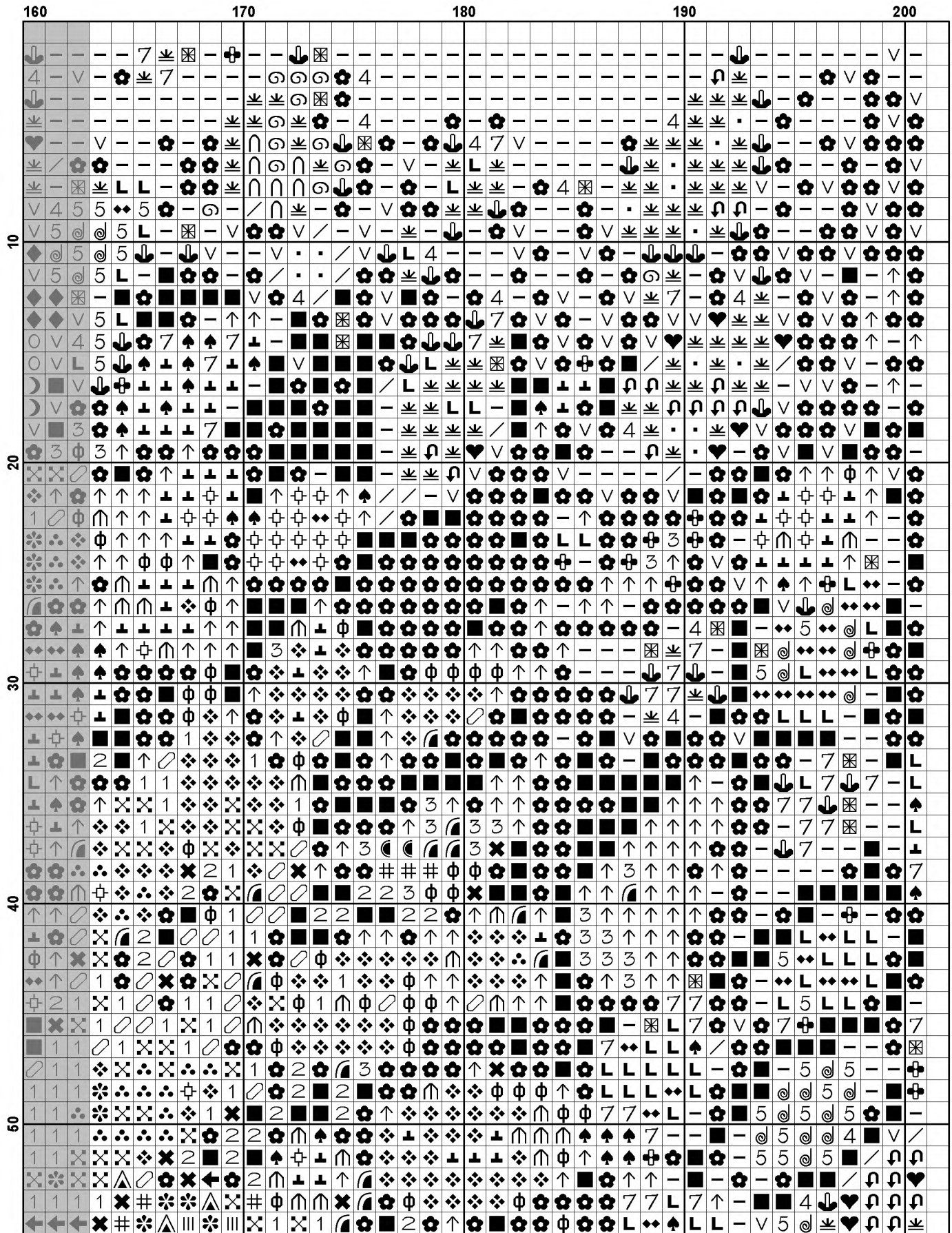
*Patterns are strictly for personal use only. It is against our copyright to make kits for sale from our designs or to sell, copy or redistribute this pattern in any form. You may not upload our patterns to any internet forums or groups or any other website. You may make 1 copy of this pattern for a working copy for your own personal use if needed.

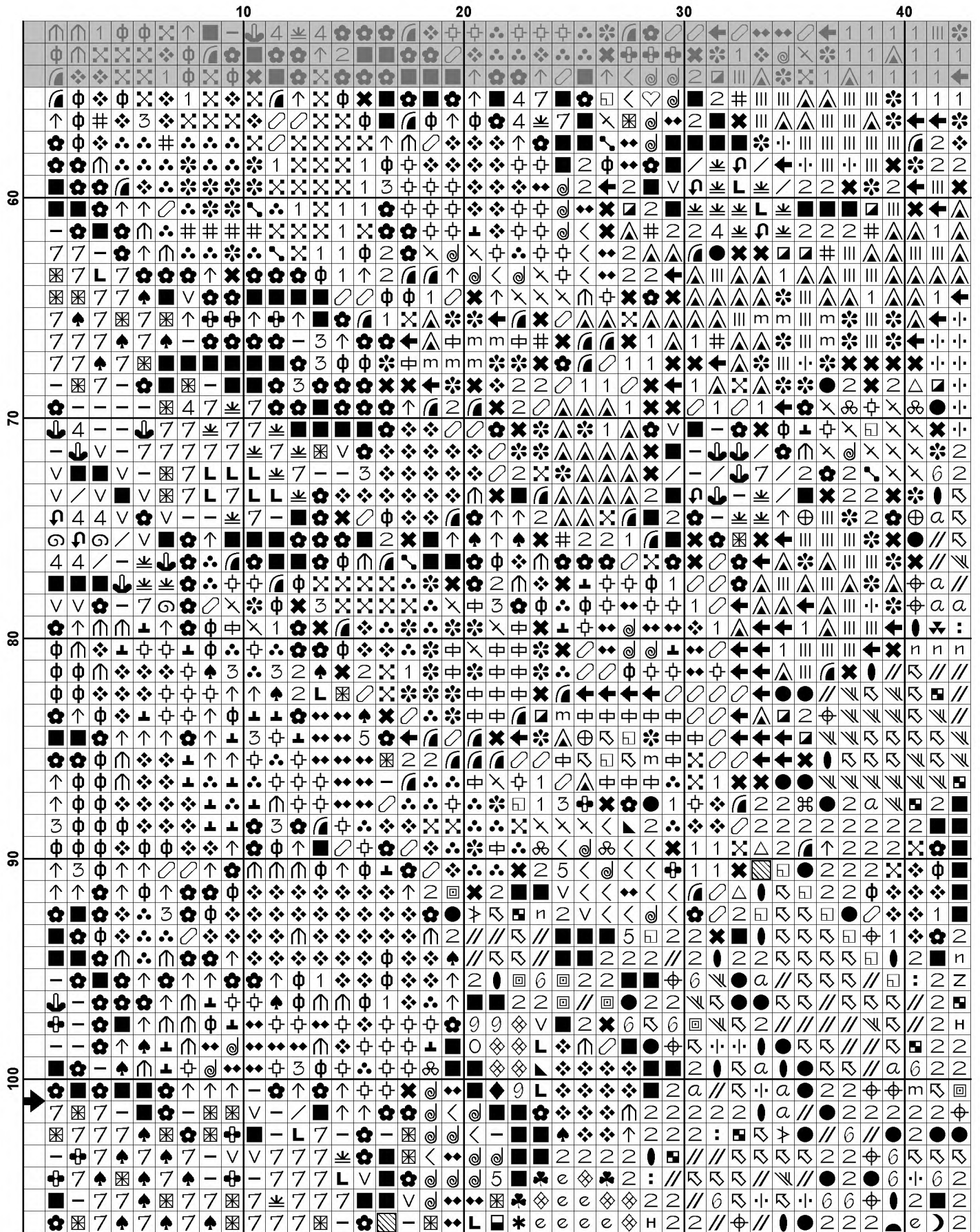


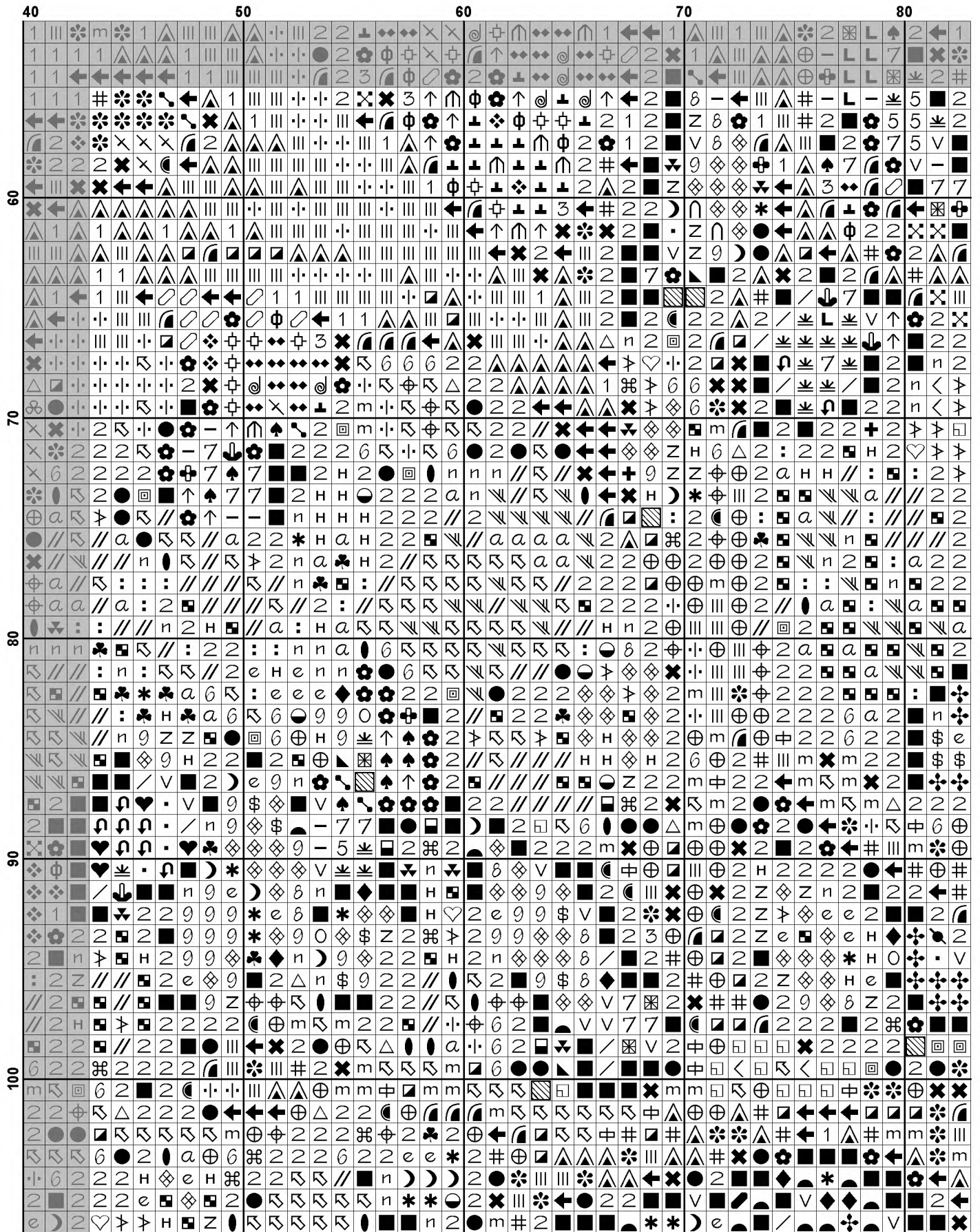


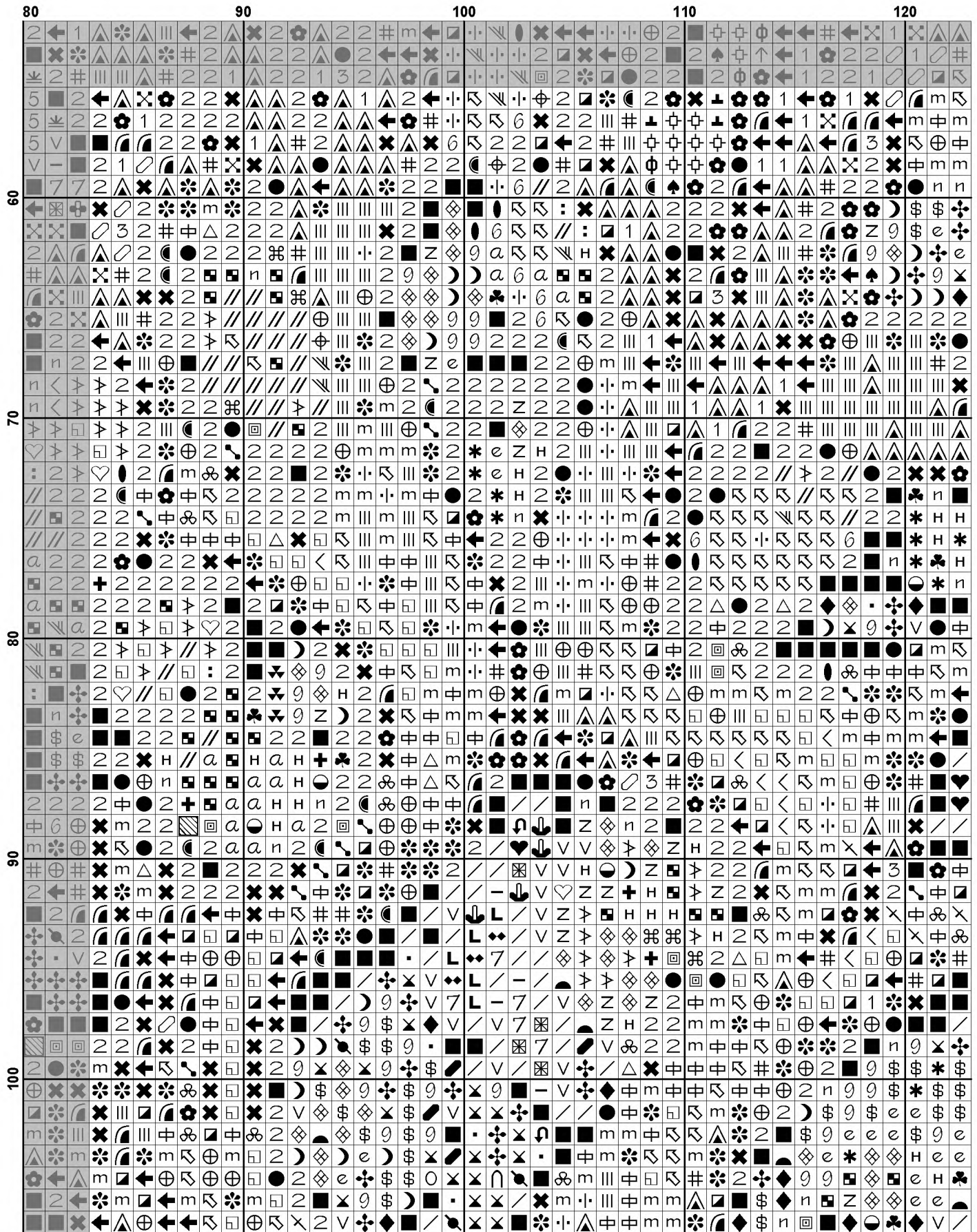


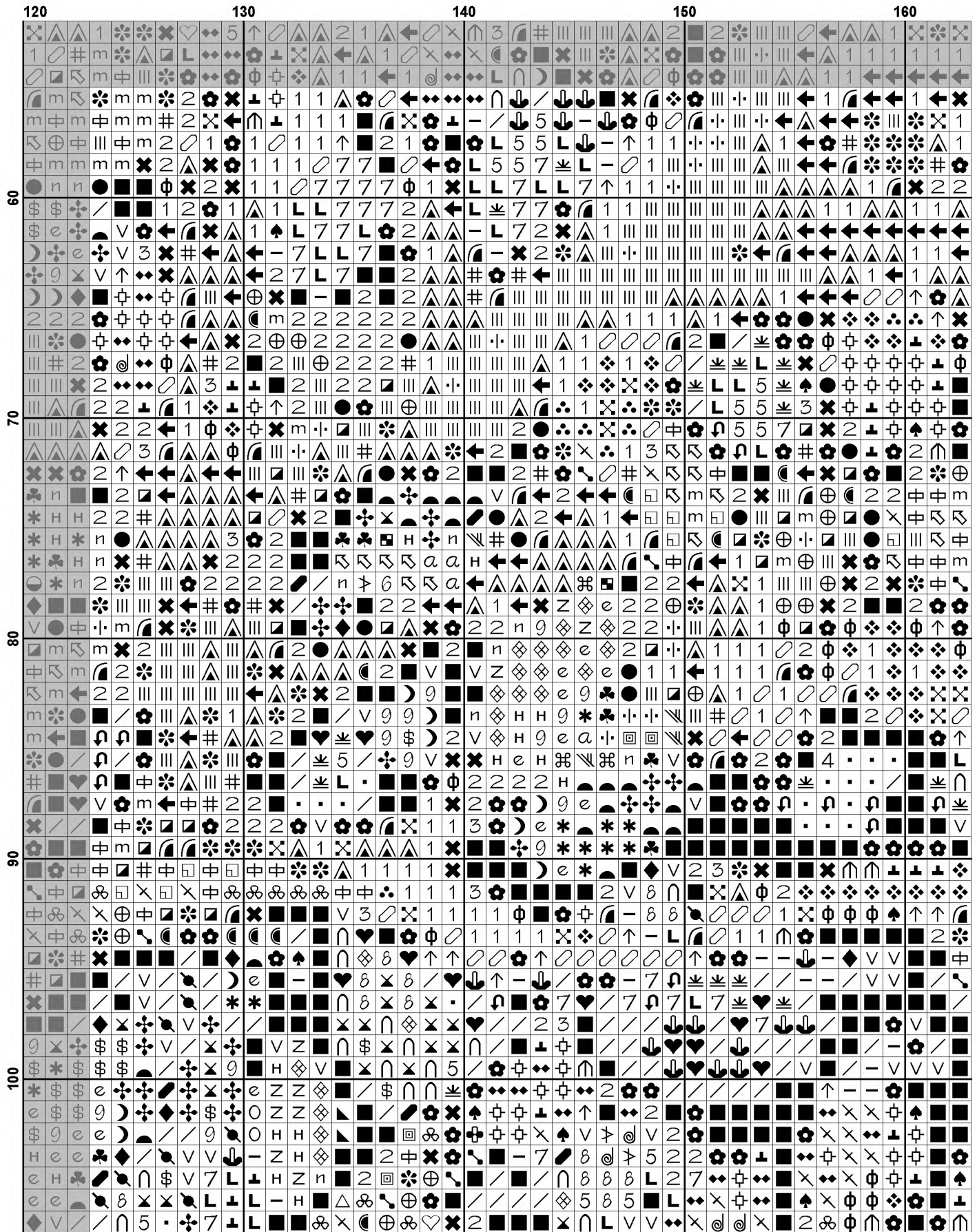


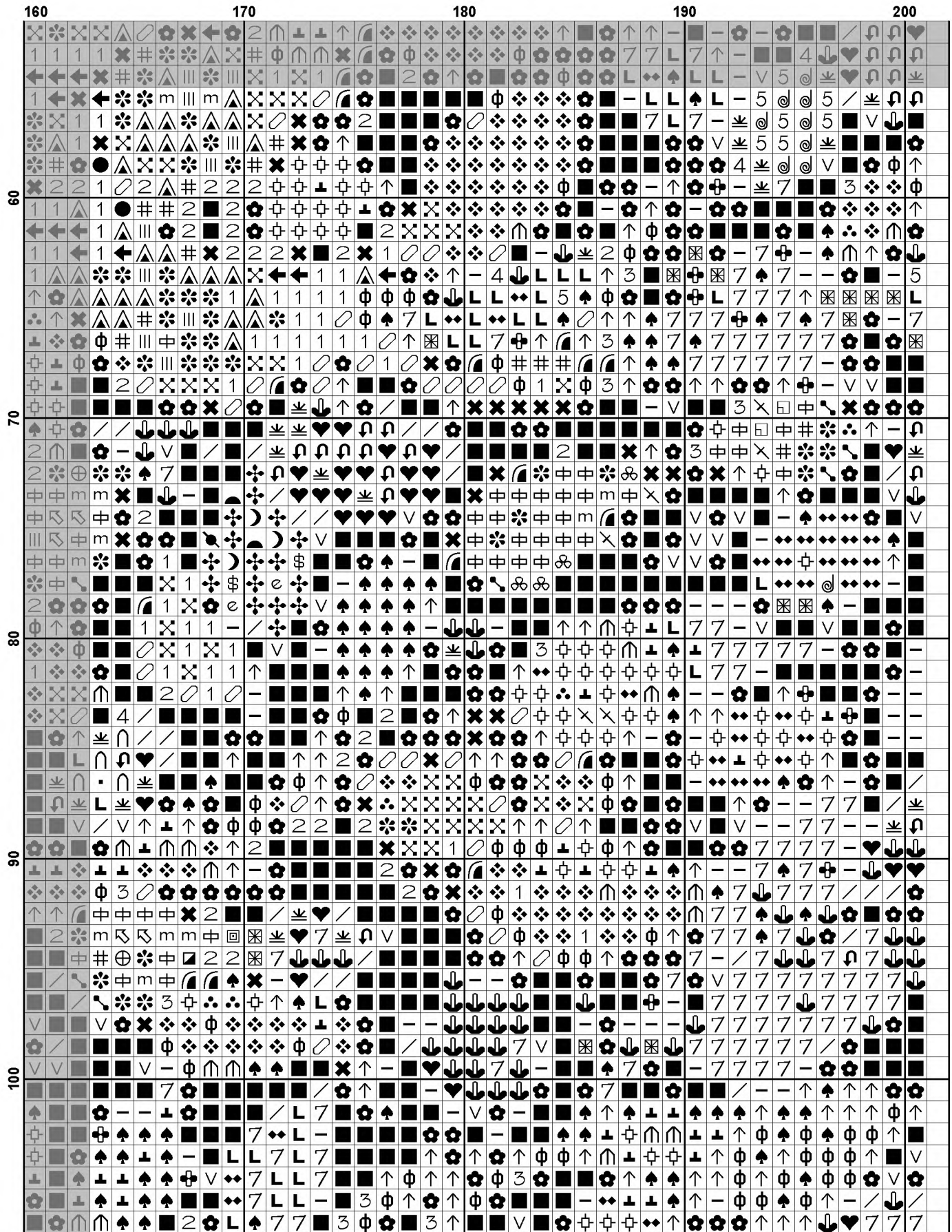


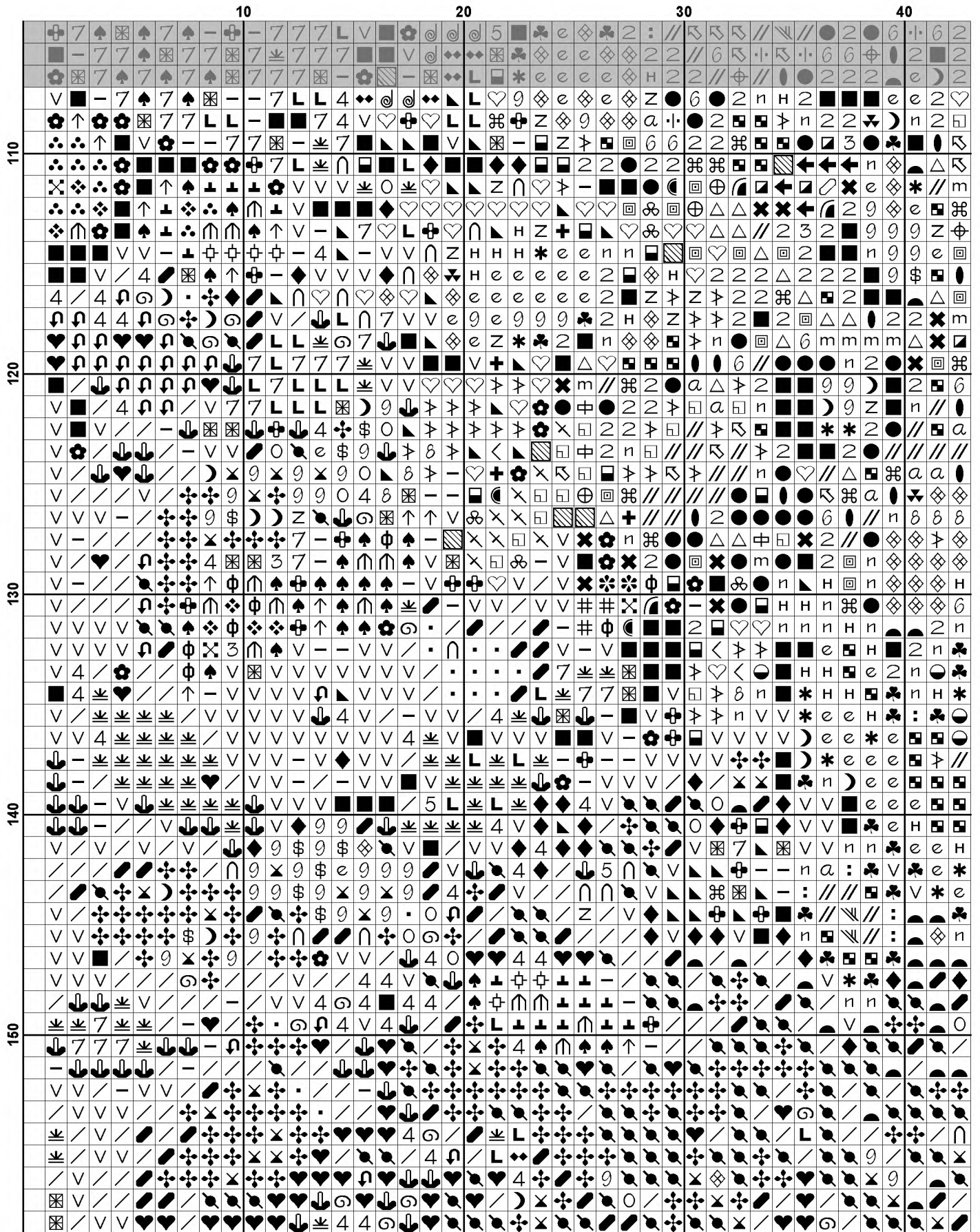


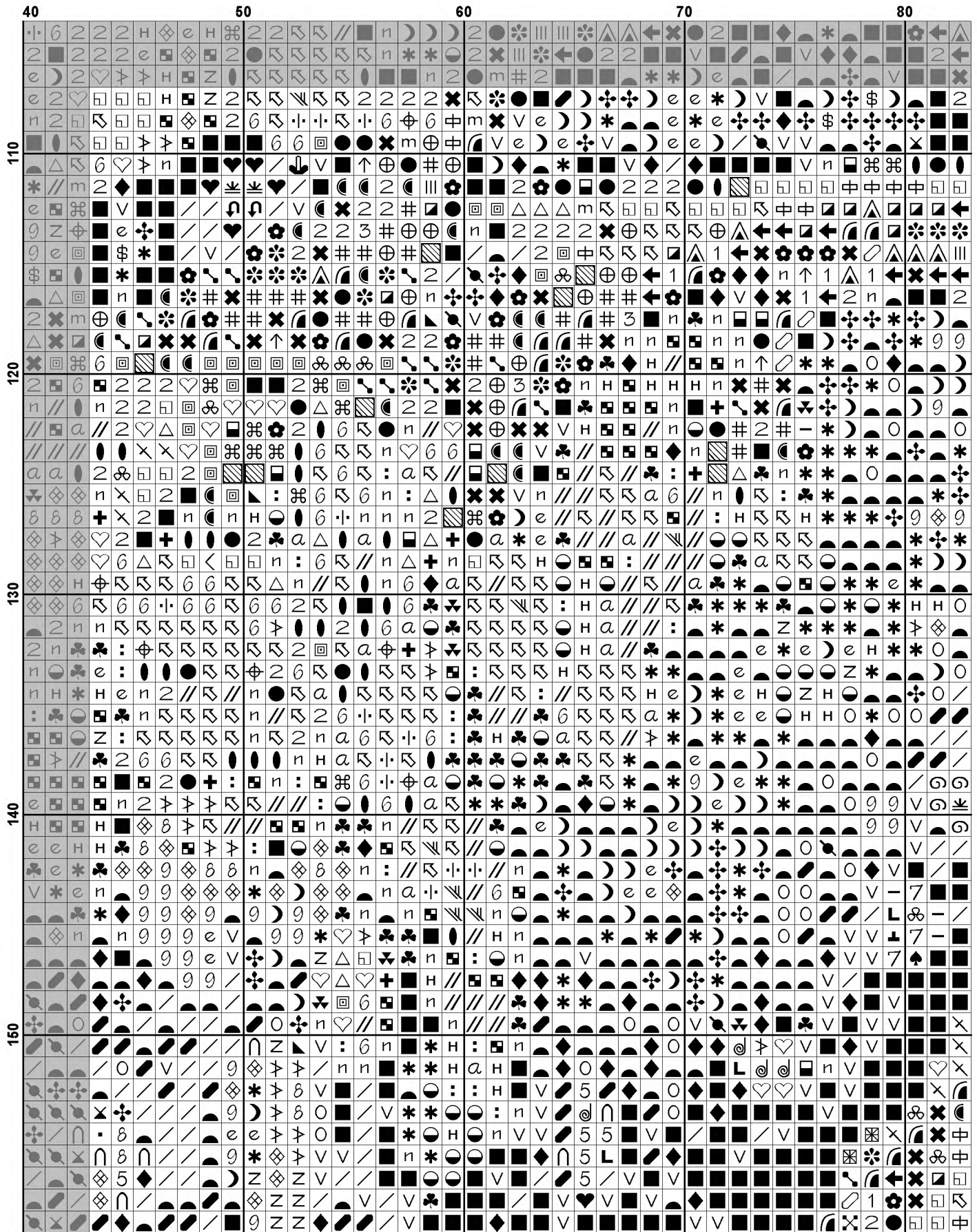


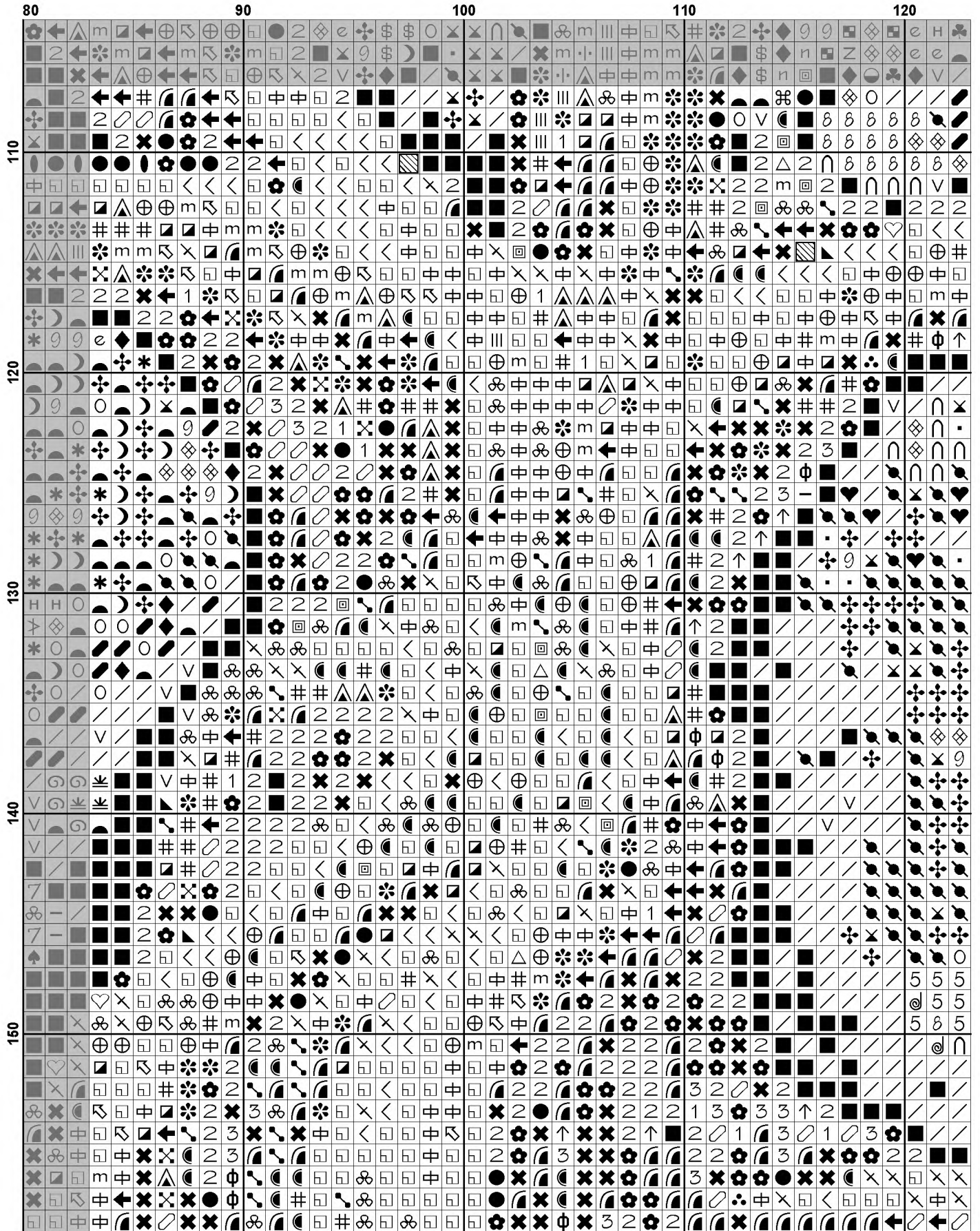


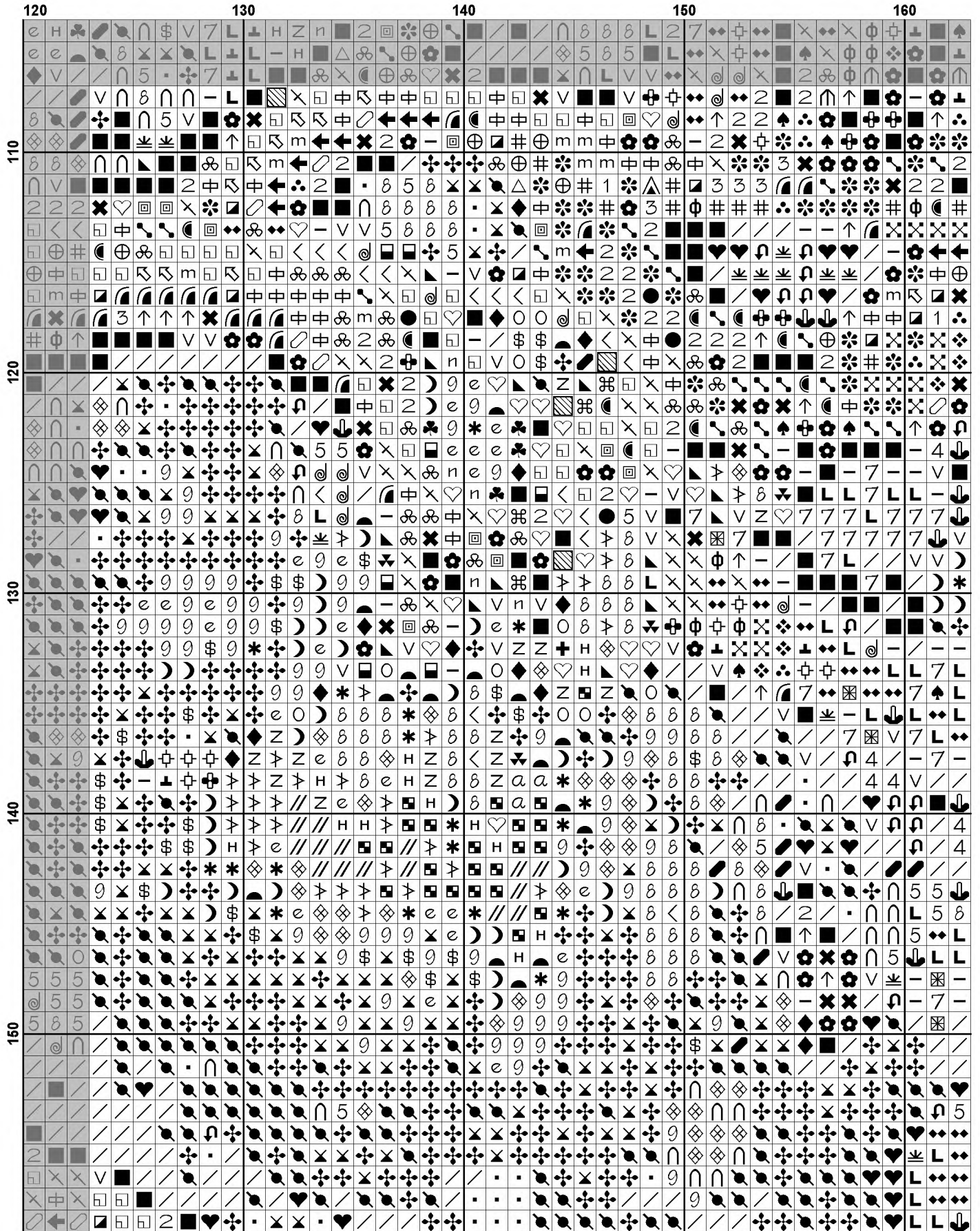


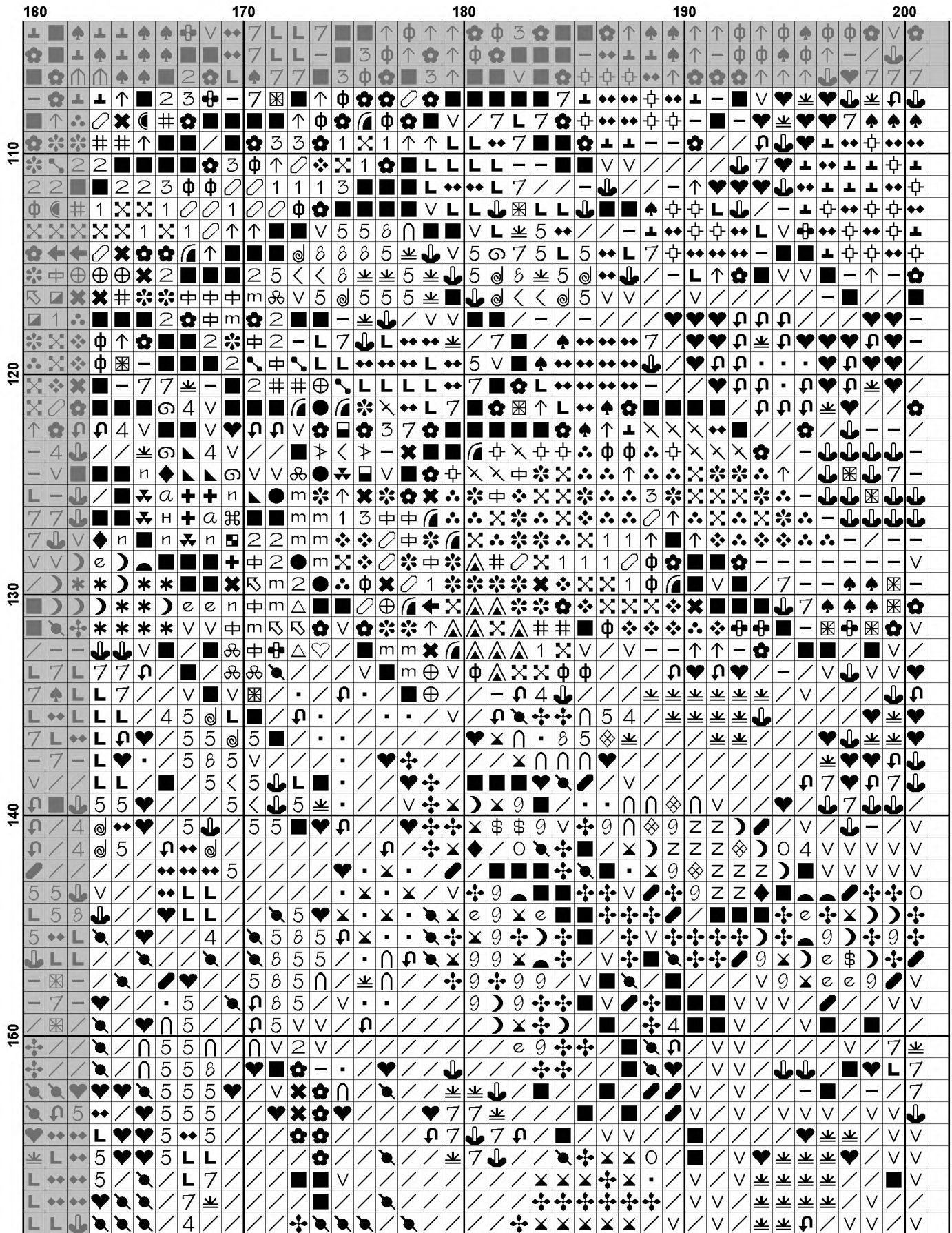


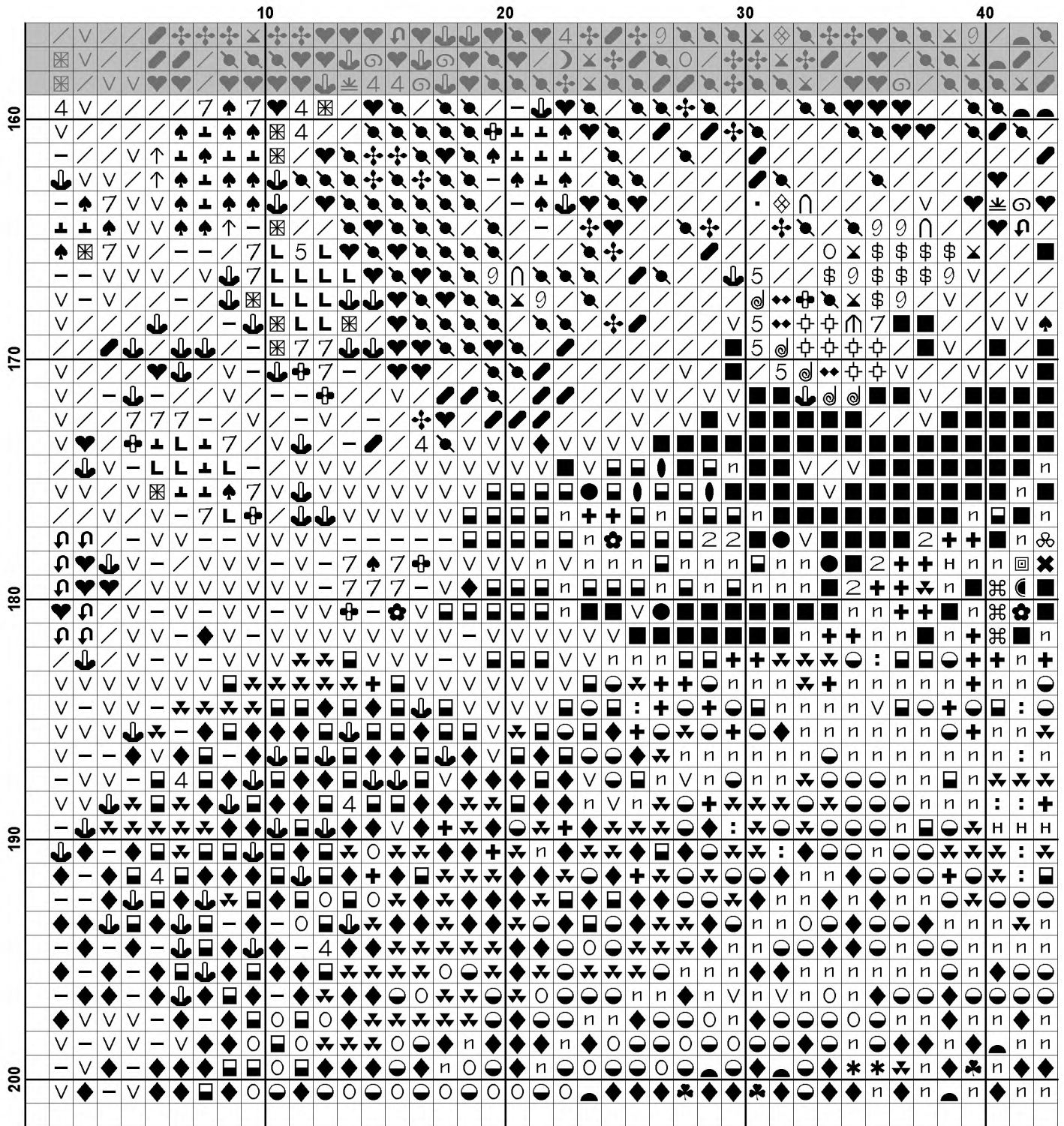


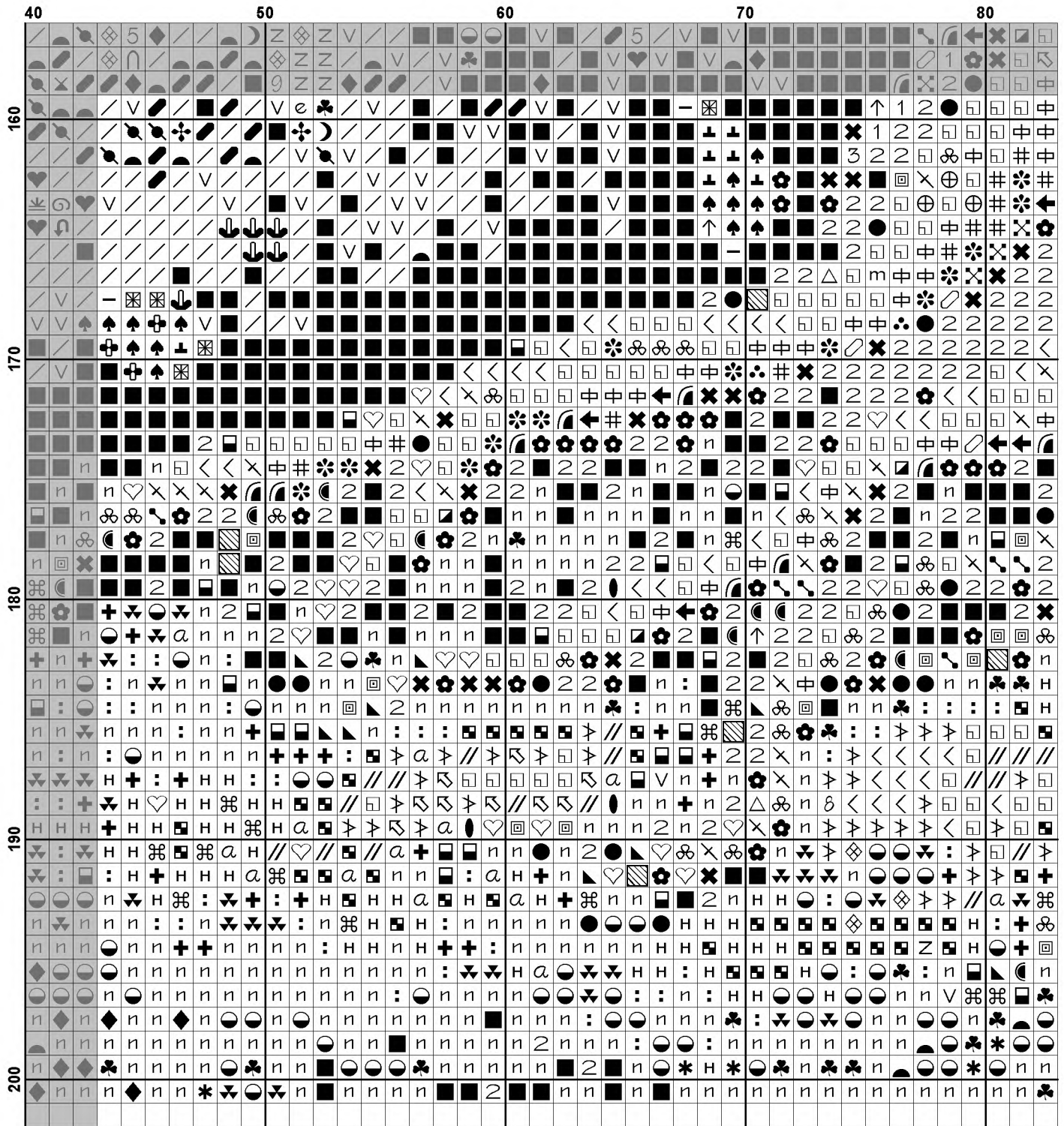


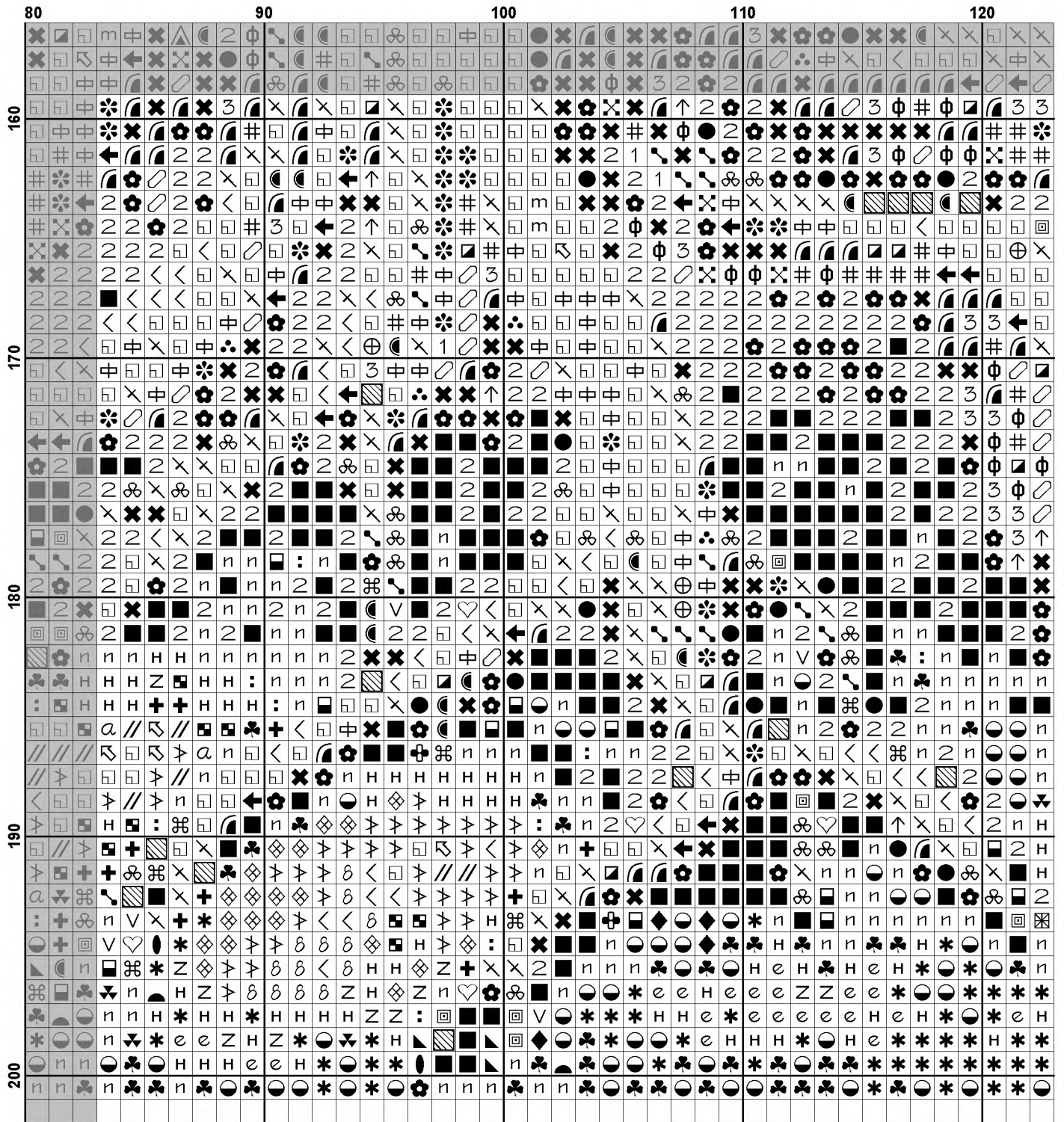


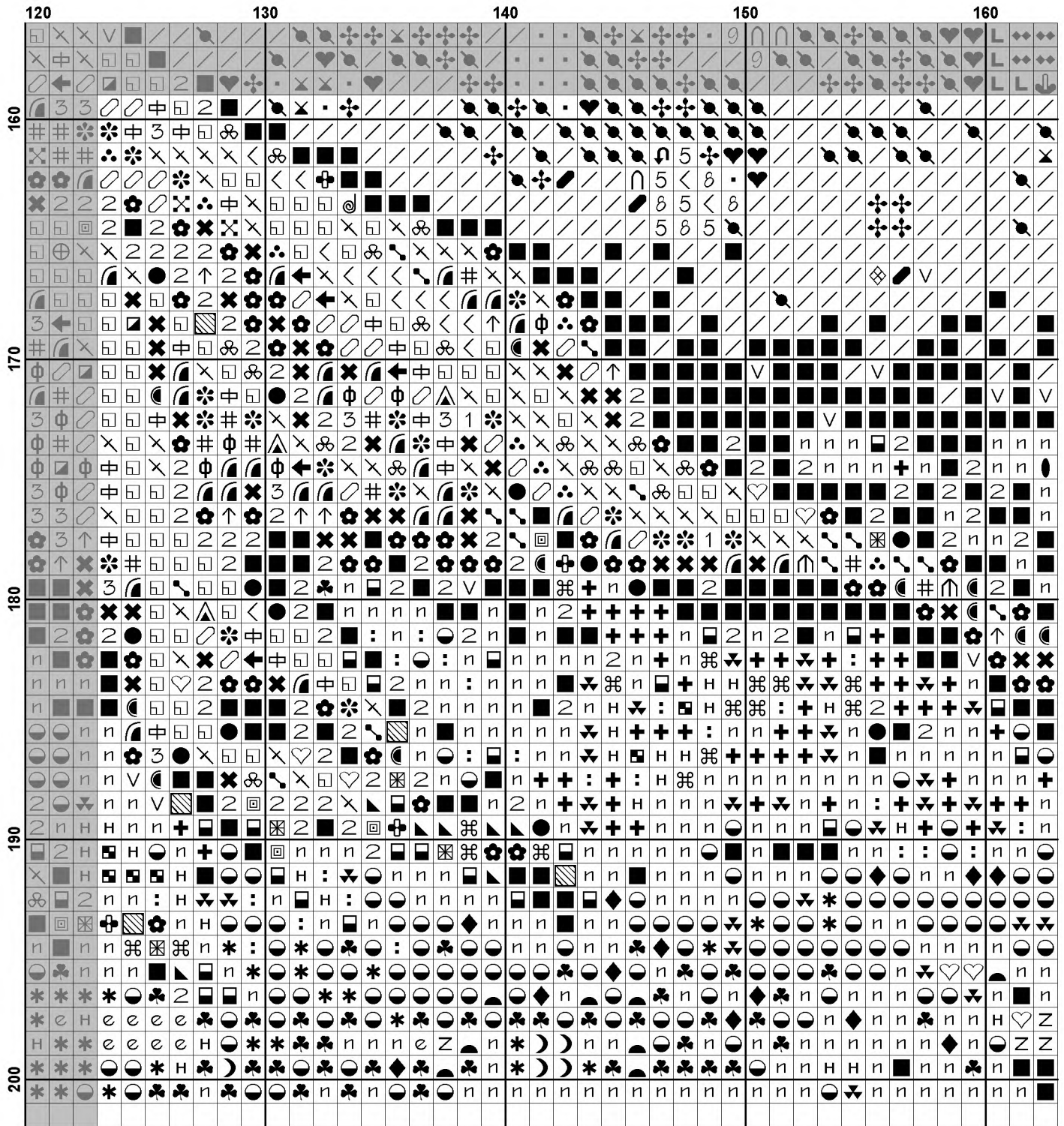


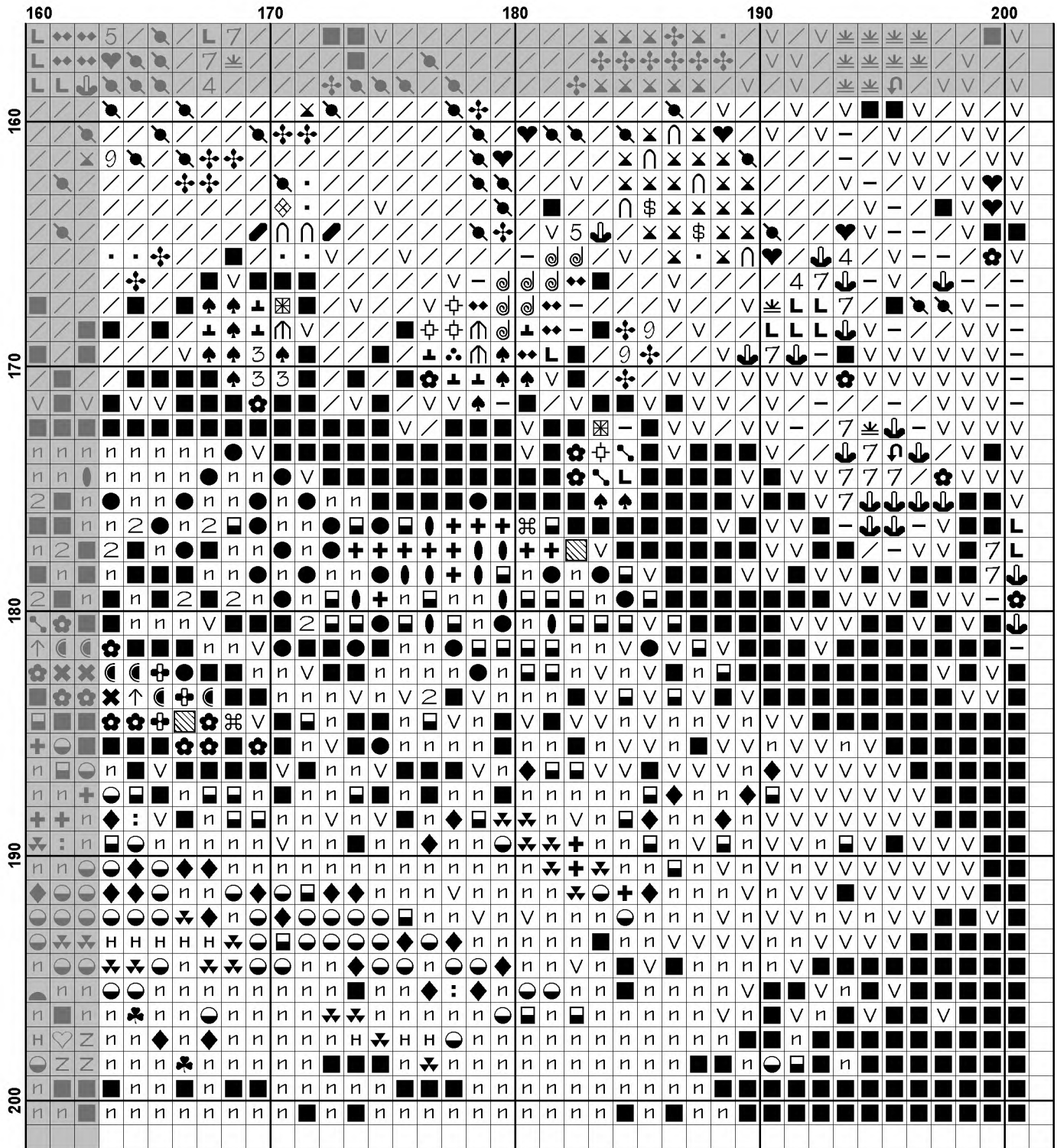












Pattern Name: Mini Colourful Tree
Designed By: Artwork by Tereena Clarke
Company: Artecy Cross Stitch
Copyright: Copyright Artecy Cross Stitch. All rights Reserved.
Fabric: Aida 14, White
 200w X 200h Stitches
Size(s): 14 Count, 14-1/4w X 14-1/4h in
 16 Count, 12-1/2w X 12-1/2h in
 18 Count, 11w X 11h in

Floss Used for Full Stitches:

Symbol	Strands	Type	Number	Color
	3	2	DMC 150	Dusty Rose-UL VY DK
	2	DMC 154	Grape-VY DK	
	4	2	DMC 158	Cornflower Blue-MD VY DK
	2	DMC 208	Lavender-VY DK	
	2	DMC 310	Black	
	2	DMC 317	Pewter Gray	
	2	DMC 321	Christmas Red	
	2	DMC 327	Violet-VY DK	
	2	DMC 333	Blue Violet-VY DK	
	5	2	DMC 340	Blue Violet-MD
	2	DMC 350	Coral-MD	
	2	DMC 371	Mustard	
	2	DMC 436	Tan	
	2	DMC 498	Christmas Red-DK	
	2	DMC 500	Blue Green-VY DK	
	2	DMC 501	Blue Green-DK	
	2	DMC 518	Wedgewood-LT	
	2	DMC 520	Fern Green-DK	
	2	DMC 550	Violet-VY DK	
	2	DMC 561	Jade-VY DK	
	2	DMC 562	Jade-MD	
	2	DMC 564	Jade-VY LT	
	2	DMC 600	Cranberry-VY DK	
	2	DMC 601	Cranberry-DK	
	2	DMC 602	Cranberry-MD	
	2	DMC 647	Beaver Gray-MD	
	2	DMC 666	Christmas Red-BRT	
	2	DMC 703	Chartreuse	
	2	DMC 704	Chartreuse-BRT	
	2	DMC 718	Plum	
	2	DMC 722	Orange Spice-LT	
	2	DMC 728	Topaz	
	2	DMC 729	Old Gold-MD	
	2	DMC 741	Tangerine-MD	
	2	DMC 743	Yellow-MD	
	2	DMC 760	Salmon	
	2	DMC 779	Cocoa-DK	
	2	DMC 791	Cornflower Blue-VY DK	
	2	DMC 792	Cornflower Blue-DK	
	2	DMC 796	Royal Blue-DK	
	2	DMC 797	Royal Blue	
	2	DMC 798	Delft Blue-DK	
	2	DMC 803	Baby Blue-UL VY DK	
	2	DMC 814	Garnet-DK	
	2	DMC 817	Coral Red-VY DK	

Symbol	Strands	Type	Number	Color
	/	2	DMC 820	Royal Blue-VY DK
	v	2	DMC 823	Navy Blue-DK
	⊕	2	DMC 832	Golden Olive
	⊛	2	DMC 891	Carnation-DK
	⊙	2	DMC 892	Carnation-MD
	a	2	DMC 905	Parrot Green-DK
	∕	2	DMC 907	Parrot Green-LT
	♣	2	DMC 909	Emerald Green-VY DK
	↑	2	DMC 915	Plum-DK
	◻	2	DMC 919	Red Copper
	●	2	DMC 936	Avocado Green-VY DK
	■	2	DMC 939	Navy Blue-VY DK
	◻	2	DMC 945	Tawny
	△	2	DMC 947	Burnt Orange
	⊕	2	DMC 956	Geranium
	9	2	DMC 958	Sea Green-DK
	⊕	2	DMC 959	Sea Green-MD
	8	2	DMC 964	Sea Green-LT
	:	2	DMC 986	Forest Green-VY DK
	z	2	DMC 992	Aquamarine-MD
	∕	2	DMC 996	Electric Blue-MD
	↘	2	DMC 3328	Salmon-DK
	✻	2	DMC 3340	Apricot-MD
	●	2	DMC 3371	Black Brown
	◆	2	DMC 3608	Plum-VY LT
	@	2	DMC 3609	Plum-UL LT
	☾	2	DMC 3721	Shell Pink-DK
	◆	2	DMC 3750	Antique Blue-VY DK
	✻	2	DMC 3765	Peacock Blue-VY DK
	<	2	DMC 3770	Tawny-VY LT
	⊕	2	DMC 3776	Mahogany-LT
	⊗	2	DMC 3778	Terra Cotta-LT
	⊗	2	DMC 3787	Brown Gray-DK
	◻	2	DMC 3799	Pewter Gray-VY DK
	✕	2	DMC 3801	Christmas Red-LT
	○	2	DMC 3808	Turquoise-UL VY DK
	*	2	DMC 3814	Aquamarine
	⊕	2	DMC 3834	Grape-DK
	7	2	DMC 3837	Lavender-UL DK
	↘	2	DMC 3842	Wedgewood-DK
	⊕	2	DMC 3846	Bright Turquoise-LT
	☾	2	DMC 3847	Teal Green-DK
	☾	2	DMC 3848	Teal Green-MD
	e	2	DMC 3851	Bright Green
	m	2	DMC 3854	Autumn Gold-MD

Notes:

The middle of this pattern can be found on page 8 and is 101 stitches across and 101 stitches down.

Pattern layout using page numbers in top left.

```

1  2  3  4  5
6  7  8  9 10
11 12 13 14 15
16 17 18 19 20

```

Usage Summary

Strands Per Skein: 6

Skein Length: 313.0 in

Type	Number	Full	Half	Quarter	Petite	Back(in)	Str(in)	Spec(in)	French	Bead	Skein Est.
DMC 150	150	208	0	0	0	0.0	0.0	0.0	0	0	1.000
DMC 154	154	2044	0	0	0	0.0	0.0	0.0	0	0	2.000
DMC 158	158	109	0	0	0	0.0	0.0	0.0	0	0	1.000
DMC 208	208	442	0	0	0	0.0	0.0	0.0	0	0	1.000
DMC 310	310	1787	0	0	0	0.0	0.0	0.0	0	0	1.000
DMC 317	317	90	0	0	0	0.0	0.0	0.0	0	0	1.000
DMC 321	321	765	0	0	0	0.0	0.0	0.0	0	0	1.000
DMC 327	327	227	0	0	0	0.0	0.0	0.0	0	0	1.000
DMC 333	333	393	0	0	0	0.0	0.0	0.0	0	0	1.000
DMC 340	340	236	0	0	0	0.0	0.0	0.0	0	0	1.000
DMC 350	350	296	0	0	0	0.0	0.0	0.0	0	0	1.000
DMC 371	371	115	0	0	0	0.0	0.0	0.0	0	0	1.000
DMC 436	436	64	0	0	0	0.0	0.0	0.0	0	0	1.000
DMC 498	498	581	0	0	0	0.0	0.0	0.0	0	0	1.000
DMC 500	500	1256	0	0	0	0.0	0.0	0.0	0	0	1.000
DMC 501	501	218	0	0	0	0.0	0.0	0.0	0	0	1.000
DMC 518	518	144	0	0	0	0.0	0.0	0.0	0	0	1.000
DMC 520	520	167	0	0	0	0.0	0.0	0.0	0	0	1.000
DMC 550	550	1447	0	0	0	0.0	0.0	0.0	0	0	1.000
DMC 561	561	460	0	0	0	0.0	0.0	0.0	0	0	1.000
DMC 562	562	304	0	0	0	0.0	0.0	0.0	0	0	1.000
DMC 564	564	220	0	0	0	0.0	0.0	0.0	0	0	1.000
DMC 600	600	525	0	0	0	0.0	0.0	0.0	0	0	1.000
DMC 601	601	255	0	0	0	0.0	0.0	0.0	0	0	1.000
DMC 602	602	475	0	0	0	0.0	0.0	0.0	0	0	1.000
DMC 647	647	143	0	0	0	0.0	0.0	0.0	0	0	1.000
DMC 666	666	1112	0	0	0	0.0	0.0	0.0	0	0	1.000
DMC 703	703	261	0	0	0	0.0	0.0	0.0	0	0	1.000
DMC 704	704	269	0	0	0	0.0	0.0	0.0	0	0	1.000
DMC 718	718	416	0	0	0	0.0	0.0	0.0	0	0	1.000
DMC 722	722	536	0	0	0	0.0	0.0	0.0	0	0	1.000
DMC 728	728	181	0	0	0	0.0	0.0	0.0	0	0	1.000
DMC 729	729	100	0	0	0	0.0	0.0	0.0	0	0	1.000
DMC 741	741	586	0	0	0	0.0	0.0	0.0	0	0	1.000
DMC 743	743	501	0	0	0	0.0	0.0	0.0	0	0	1.000
DMC 760	760	387	0	0	0	0.0	0.0	0.0	0	0	1.000
DMC 779	779	60	0	0	0	0.0	0.0	0.0	0	0	1.000
DMC 791	791	418	0	0	0	0.0	0.0	0.0	0	0	1.000
DMC 792	792	45	0	0	0	0.0	0.0	0.0	0	0	1.000
DMC 796	796	281	0	0	0	0.0	0.0	0.0	0	0	1.000
DMC 797	797	197	0	0	0	0.0	0.0	0.0	0	0	1.000
DMC 798	798	144	0	0	0	0.0	0.0	0.0	0	0	1.000
DMC 803	803	170	0	0	0	0.0	0.0	0.0	0	0	1.000
DMC 814	814	823	0	0	0	0.0	0.0	0.0	0	0	1.000
DMC 817	817	469	0	0	0	0.0	0.0	0.0	0	0	1.000
DMC 820	820	1734	0	0	0	0.0	0.0	0.0	0	0	1.000
DMC 823	823	1224	0	0	0	0.0	0.0	0.0	0	0	1.000
DMC 832	832	40	0	0	0	0.0	0.0	0.0	0	0	1.000
DMC 891	891	939	0	0	0	0.0	0.0	0.0	0	0	1.000
DMC 892	892	313	0	0	0	0.0	0.0	0.0	0	0	1.000
DMC 905	905	111	0	0	0	0.0	0.0	0.0	0	0	1.000

Type	Number	Full	Half	Quarter	Petite	Back(in)	Str(in)	Spec(in)	French	Bead	Skein Est.
DMC	907	79	0	0	0	0.0	0.0	0.0	0	0	1.000
DMC	909	211	0	0	0	0.0	0.0	0.0	0	0	1.000
DMC	915	788	0	0	0	0.0	0.0	0.0	0	0	1.000
DMC	919	193	0	0	0	0.0	0.0	0.0	0	0	1.000
DMC	936	99	0	0	0	0.0	0.0	0.0	0	0	1.000
DMC	939	3358	0	0	0	0.0	0.0	0.0	0	0	2.000
DMC	945	787	0	0	0	0.0	0.0	0.0	0	0	1.000
DMC	947	817	0	0	0	0.0	0.0	0.0	0	0	1.000
DMC	956	548	0	0	0	0.0	0.0	0.0	0	0	1.000
DMC	958	275	0	0	0	0.0	0.0	0.0	0	0	1.000
DMC	959	321	0	0	0	0.0	0.0	0.0	0	0	1.000
DMC	964	172	0	0	0	0.0	0.0	0.0	0	0	1.000
DMC	986	163	0	0	0	0.0	0.0	0.0	0	0	1.000
DMC	992	119	0	0	0	0.0	0.0	0.0	0	0	1.000
DMC	996	270	0	0	0	0.0	0.0	0.0	0	0	1.000
DMC	3328	147	0	0	0	0.0	0.0	0.0	0	0	1.000
DMC	3340	760	0	0	0	0.0	0.0	0.0	0	0	1.000
DMC	3371	314	0	0	0	0.0	0.0	0.0	0	0	1.000
DMC	3608	405	0	0	0	0.0	0.0	0.0	0	0	1.000
DMC	3609	165	0	0	0	0.0	0.0	0.0	0	0	1.000
DMC	3721	186	0	0	0	0.0	0.0	0.0	0	0	1.000
DMC	3750	363	0	0	0	0.0	0.0	0.0	0	0	1.000
DMC	3765	667	0	0	0	0.0	0.0	0.0	0	0	1.000
DMC	3770	241	0	0	0	0.0	0.0	0.0	0	0	1.000
DMC	3776	223	0	0	0	0.0	0.0	0.0	0	0	1.000
DMC	3778	214	0	0	0	0.0	0.0	0.0	0	0	1.000
DMC	3787	98	0	0	0	0.0	0.0	0.0	0	0	1.000
DMC	3799	284	0	0	0	0.0	0.0	0.0	0	0	1.000
DMC	3801	594	0	0	0	0.0	0.0	0.0	0	0	1.000
DMC	3808	112	0	0	0	0.0	0.0	0.0	0	0	1.000
DMC	3814	257	0	0	0	0.0	0.0	0.0	0	0	1.000
DMC	3834	201	0	0	0	0.0	0.0	0.0	0	0	1.000
DMC	3837	599	0	0	0	0.0	0.0	0.0	0	0	1.000
DMC	3842	540	0	0	0	0.0	0.0	0.0	0	0	1.000
DMC	3846	119	0	0	0	0.0	0.0	0.0	0	0	1.000
DMC	3847	343	0	0	0	0.0	0.0	0.0	0	0	1.000
DMC	3848	213	0	0	0	0.0	0.0	0.0	0	0	1.000
DMC	3851	223	0	0	0	0.0	0.0	0.0	0	0	1.000
DMC	3854	244	0	0	0	0.0	0.0	0.0	0	0	1.000